

QUICK START  
USER GUIDE

***Shadow Tracker*** <sup>TM</sup>

***Lite*** *Version 2*





# Shadow Tracker™ Lite Version 2.0 GPS System

---

## **COPYRIGHT NOTICE**

Copyright 2004 Advanced Tracking Technologies, Inc.  
All rights reserved.

## **TRADEMARKS**

ATTI, Advanced Tracking Technologies, MobilEyes, and Shadow Tracker are trademarks of Advanced Tracking Technologies, Inc.

Microsoft, Windows and the Windows logo are registered trademarks of the Microsoft Corporation.

Pentium is the registered trademark of Intel Corporation.

Other brands and products are trademarks of their respective holders.

## **RESTRICTED RIGHTS LEGEND**

Use, duplication, or disclosure by the Government is subject to restrictions as set forth in subparagraph ©(1)(ii) of the Rights in Technical Data and Computer Software clause at DFARS 252.227-7013 or subparagraphs ©(1) and (2) of Commercial Software-Restricted Rights at 48 CFR 52.227-19, as applicable.

Advanced Tracking Technologies, Inc.  
6001 Savoy, Suite 600  
Houston, Texas 77036

Visit our website at:  
[www.AdvanTrack.com](http://www.AdvanTrack.com)

For Technical Support:  
[Tech@Advantrack.com](mailto:Tech@Advantrack.com)



## Table Of Contents

<b>Overview of Shadow Tracker™ Lite</b>	<b>1</b>
<b>System Requirements</b>	<b>2</b>
<b>Software Installation</b>	<b>2</b>
<b>Starting Shadow Tracker™ Lite</b>	<b>3</b>
<b>Getting to know Shadow Tracker™ Lite</b>	<b>4</b>
<b>Database Maintenance</b>	<b>5</b>
<b>Database Backup</b>	<b>5</b>
<b>Database Purge</b>	<b>6</b>
<b>Database Compact</b>	<b>7</b>
<b>User Notes</b>	<b>8</b>

# **Overview of Shadow Tracker Lite Version 2.0**

The Advanced Tracking Technologies, Inc. (ATTI) family of products includes Shadow Tracker Lite Version 2.0, a vehicle tracking product designed exclusively for the consumer market. The Shadow Tracker Lite V2.0 vehicle monitoring system provides mileage documentation and performs vehicle tracking services for any vehicle.

## **How does this vehicle monitoring system work?**

The Shadow Tracker Jr. is a miniature tracking device for monitoring the travel activities of vehicles using GPS (Global Positioning System), a technology created and maintained by the U.S. Department of Defense. Designed to be easily used within the vehicle, Shadow Tracker Jr. gathers and stores GPS signals telling the locations of where the vehicle has been, how long the vehicle was there, the time at each location and the speed.

The Shadow Tracker Jr. unit is then downloaded to the Shadow Tracker Lite V2.0 software which displays the complete route of the vehicle. Speed along the route is displayed by an easy to read color-coded line. The map displays street names, destinations, speed and other travel related activities, or it may be printed in the form of a detailed report. Additionally, when plugged into a laptop, Shadow Tracker Lite V2.0 becomes an on-board navigation device displaying planned destination routes you define as well as your current real time location.

## **Benefits of Shadow Tracker Lite V2.0:**

- Prints the complete travel route of any vehicle
- Documents individual mileage and time for tax purposes
- Indicates speed of the vehicle along the route
- Shows number of stops and time spent at each destination
- Shows the miles driven at any time
- Comes with map of the U.S.A., complete with street names
- Hardware is easy to install in any vehicle
- Software is user friendly
- No monthly fees

## System Requirements

Before installing Shadow Tracker™ Lite V2.0, make sure your computer meets these minimum requirements:

- Pentium 166 MHz processor minimum; 350 MHz recommended
- 16MB RAM; 32MB or greater recommended
- SVGA Monitor
- 12x CD ROM drive
- 2MB Video RAM
- 1.44 Floppy Drive
- One open 9 pin com port
- Windows 95, 98, NT, 2000 or ME.



Color selection in the Video Driver Settings should be set to a minimum of 256 colors and a Windows compatible color printer for best viewing results.

## Software Installation

Before installing the Shadow Tracker™ Lite V2.0 software, verify that you have closed all open programs - including those that run in the background, such as screen savers.

- Insert the Shadow Tracker Lite V2.0 CD into the CD ROM drive of your computer.
- Click **RUN** from the Windows Start menu located on your taskbar.
- In the command line box labeled "Open", type the drive letter of your CD ROM drive then type :\\Setup. (Example: D:\\Setup)
- Click **OK**. (Do not type a space between the drive letter and the slash.) An install screen will appear.
- Follow the on-screen instructions for loading the program by typing in the CD Key located on the back cover of your Shadow Tracker Lite V2.0 CD case.
- In the Choose Destination Location window, the default location for Shadow Tracker™ Lite V2.0 is c:\\Program Files\\STLite\\. You can specify another location. Click **Next** when you are finished.
- You will receive a series of messages as Shadow Tracker™ Lite V2.0 loads the necessary files to your local computer. When complete, you will receive a message indicating Shadow Tracker™ Lite V2.0 has been properly installed.

**Shadow Tracker Lite V2.0 uses certain data files for map viewing. These files are NOT copied to your computer and can only be accessed from your CD. Therefore, your Shadow Tracker™ Lite V2.0 CD must always be in your CD ROM drive in order for the Shadow Tracker Lite V2.0 software to function. You cannot manually copy these files.**

## Starting Shadow Tracker Lite Version 2.0

When you are ready to begin using Shadow Tracker Lite V2.0, open the program by clicking the Shadow Tracker Lite V2.0 program name listed under Programs of your Windows Start Menu.



You will be prompted for a Username and Password to open Shadow Tracker Lite V2.0.

The default login and password is:

**Username: Administrator**

**Password: root (case sensitive)**

Once you are in the Shadow Tracker Lite V2.0 program, you have access to Help Files and Training Cards.

**Click Help from the menubar for complete instructions and interactive assistance on how to use the Shadow Tracker Lite V2.0 program.**

## Getting to know Shadow Tracker™ Lite Version 2.0

All of the features of Shadow Tracker Lite V2.0 can be accessed from the main window by selecting an item from the menu bar.

### •Map

Use items from here to adjust map display options, create a route, draw a street on the map or search for a street or city.

### •Track

From here you can display a historical track or plot your real time location. Print a report or print the map's display.

### •Pinpoint

Create, view and adjust pinpoint locators or adjust the target area deviation for location display.

### •Unit

Download, add, remove, erase, assign a driver or view the settings of a Shadow Tracker Jr., Pro or Performer unit.

### •Tools

From here you can purge old tracking data or compact/repair your database. You can also change your username and/or password.

### •Help

Use the Help Topics and Training Cards to assist you in getting the most from your Shadow Tracker Lite V2.0 system.

For more information about using Shadow Tracker Jr., Pro or Performer see the **Shadow Tracker Jr., Pro, Performer Hardware Manual**.

## Database Maintenance

Performing regular Database Maintenance is an important part of safeguarding your GPS data records. Shadow Tracker™ Lite makes it easy to perform routine Database operations quickly and safely. The Database Backup, Database Purge and Database Compact and Repair utilities will help you to keep your Shadow Tracker™ Lite program running at its best.

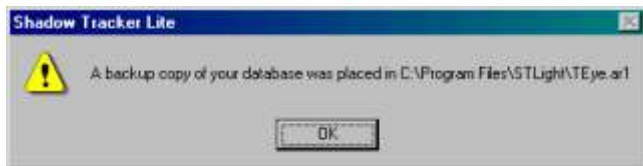
Before performing any database maintenance, it is recommended that you always make a copy of your database first, just in case.

## Database Backup

To make a backup of your database:

1. From the Shadow Tracker™ Lite program window, click **Tools** and then click **Data backup...**

A backup of your database will be created and placed in the Shadow Tracker™ Lite program folder. You will receive a confirmation message informing you that the backup was successfully performed, as well as the location and file name of the backup. (below)



**Note:** Backup databases are saved using an “.AR#” file extension.

## Database Purge

It is recommended that you discard unused GPS data from the database on a periodic basis. Doing this will assure efficient data processing and program response. In most cases, data downloaded from your tracking units make up around 85% of the size of your database. Your database should not reach 1 gigabyte in size or damage to the database structure and/or data will occur. The size of your database is displayed at the bottom of the Shadow Tracker™ Lite program window.

To make sure you are getting the true database size you can at anytime perform a compact on the database. This will delete unused space and reduce the database down to its smallest size.

If you wish to keep all of your data for future reference, make a copy of your database first and place it in a safe location. That way, you will always have these records available in the future. You can later connect to your backup database to view the archived records.

To purge unused data from your database:

1. From the Shadow Tracker™ Lite program window, click **Tools** and then click **Data Purge...**
2. In the Database Purge Utility window use the up/down arrows to select the date range of GPS records to be deleted. To view the number of GPS records to be deleted, click **Count**. Click **Begin** to delete the GPS records. (below)



3. You will receive a message asking “Are you certain you wish to discard these GPS records?” To proceed click **Yes**.

You will then receive a notification that the “Clearing of Records has been completed.” Click **OK**.

## Database Compact

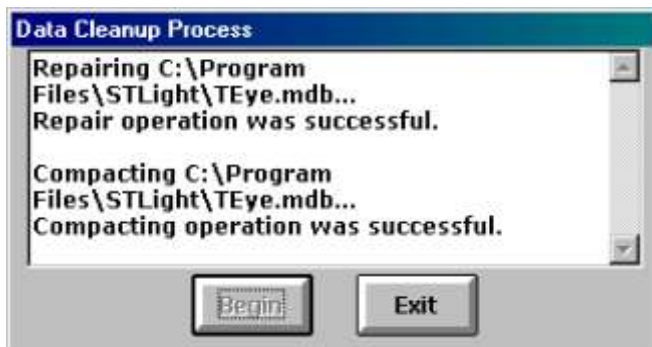
Data in your program is constantly being added, evaluated and rearranged. Your database can become fragmented and use disk space inefficiently. Compacting the database makes a copy of the database and then rearranges how the data file is stored on disk. At anytime, especially after you purge data, you can perform a compact on your database to release disk space so your program runs more efficiently.

To compact your database:

1. From the Shadow Tracker™ Lite program window, click **Tools** and then click **Data Cleanup...**
2. From the Data Cleanup Process window click **Begin**. (below)



You will receive a confirmation message that the Repair and Compacting operations were successful. Click **Exit**. (below)



**User Notes:**

## **User Notes:**

***Shadow Tracker™ Lite***  
Quick Start User Guide  
Manual Number: M-  
21611



P.O. Box 168  
Sugar Land, Texas 77487  
Tel: (713) 353-6065  
Fax: (713) 353-6050  
[www.AdvanTrack.com](http://www.AdvanTrack.com)